

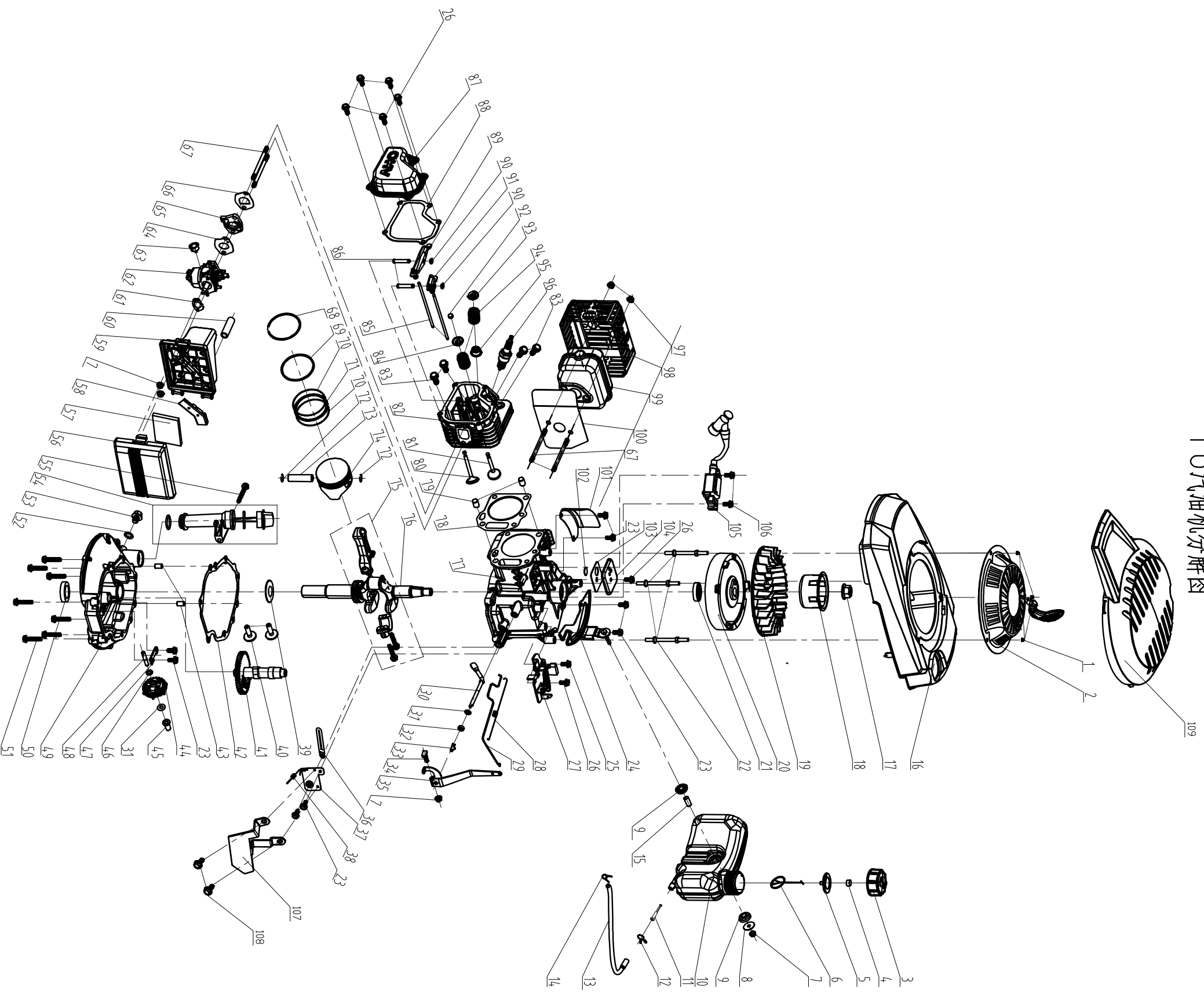
				定速刹车+H轮+快速扳			宁波市德霖机械有限公司	
				手			S463VHY-T6	
标记	处数	更改文件号	签字	日期	图样标记	重量	比例	
设计			标准化				1:15	
审核								
工艺			日期		共 页		第 页	

PM 4735-852580-S463VHY-T6-part list-2018112

Model: S463VHY			
	Material No.	English Description	Qty
1	60100020000	blade bolt	1
2	70040070000	blade washer	1
3	70131080000	The blade assembly	1
4	70140900000	Blade Adapter	1
5	60060390000	Hexagon head bolts	1
6	60060180000	Hex flange bolts	2
7	20660250000	belt cover	1
8	20200350000	Face twist before hand	1
9	20200340000	front mask	1
10	60170290000	Phillips flat head self tapping screw	26
11	60240300000	Type D ring	2
12	60410690000	selfpropelled spring	1
13	70180470640	Height Adjustment Pull Rod	1
14	70742130130	deck welding assy.	1
15	70060130130	Bracket plate for defelctor	1
16	60170580000	self tapping screw	2
17	20120130000	mulching board	1
18	20110170000	side discharge cover	1
19	70030920000	Mulch Shaft	1
20	60390310000	mulch board spring	1
21	20650200000	control board upper cover	1
22	20490090000	block	1
23	60380600000	cover spring	1
24	60200580000	Gasket	1
25	60171220000	Cross recessed countersunk head tapping screw	2
26	60200550000	flat Gasket	8
27	60060520000	Bolt	2
28	70250230000	Board for Height Adjuster	1
29	60150080000	Self-locking nut	4
30	20460030000	inlet	1
31	20460010000	inlet	1
32	60370020000	"O" ring	1
33	20590020000	cable stopper	1
34	T851970	petrol engine	1
35	20620200640	outer cover of hub	2
36	60150090000	Self-locking nut	4
37	20610120000	inner cover of hub	2
38	20880300000	wheel assy.	2
39	60180110000	Resilient washer	2
40	70840440000	front drive assy.	1
41	60240060000	spring washer	6
42	70300180000	Ratchet Wheel L	1
43	21070030000	selfpropelled ratchet washer	2
44	60200110000	flat Gasket	2
45	20430030060	rear wheel axle sleeve	2
46	60290080000	bratchet pin	2

47	70860560000	petrol engine	1
48	70050340000	Brake spring	1
49	60410680000	selfpropelled spring	1
50	60320270000	v belt	1
51	70300170000	Ratchet Wheel L	1
52	70290430000	Rear plate	2
53	20620220640	outer cover of hub	2
54	20880310000	wheel assy.	2
55	20610190000	inner cover of hub	2
56	70850860000	rear drive assy.	1
57	20270010000	height adjustment ball	1
58	20070100004	fabric grass bag	1
59	70010110000	fabric metal frame	1
60	70040100000	blade washer	2
61	20090020000	protection board of grass bag	1
62	20750220000	Grass on the box	1
63	20060080000	air-out board of fabric grass bag cover	1
64	60240310000	washer	1
65	20380110000	rear discharge cover	1
66	60380240000	cover spring	1
67	60300030000	R type pin	1
68	70030910000	Shaft for rear discharge cover	1
69	20390050000	rear discharge base	1
70	20400170000	rear baffle	1
71	20160200000	mulching plug	1
72	60200140000	flat Gasket	2
73	60170270001	Cross recessed Pan head tapping screws	2
74	70520420031	lower handrail	1
75	20240020000	fastener	1
76	60140080000	Hexagon nut	2
77	20040140640	triangle knob	2
78	60190140000	flat washer	2
79	70050180000	lock for fast fix handle	2
80	70220020000	Quick Fix Handle	2
81	60250080000	Pin	2
82	20580020640	quick fix knob	2
83	70500550031	upper handrail	1
84	70230090000	Rope Guide	1
85	60130020000	Cap nut	1
86	60060590000	Bolt	2
87	20030030000	lever guard	1
88	70550100130	Self-propelled Lever	1
89	20340060130	foam pipe	1
90	70540083640	stop lever	1
91	70050120000	Brake Cable Assy plate	1
92	70810080000	brake cable	1
93	70780220000	selfpropelled cable	1

丁6汽油机分解图



宁波市德隆机械有限公司		丁6汽油机分解图		版本 A1	
设计	审核	制图	校对	工艺	
日期	比例	张数	张序	共 1 页	第 1 页
姓名	日期	姓名	日期	姓名	日期
更改内容	更改日期	更改内容	更改日期	更改内容	更改日期

比例
 张数
 张序
 共 1 页
 第 1 页

735-852580-T6-Engine- part list-201

	Material Code	English	Qty
1	60130020000	Cap nut	3
2	75430110000	pull starter assy.	1
3	25170110000	fuel tank cap	1
4	80010070000	fuel tank cap sponge	1
5	60440340000	Fuel Tank Cap seal gas	1
6	25250010000	connect cable of fuel	1
7	60140020000	Hex flange nuts	4
8	60190310000	The oil tank mount bi	1
9	25310030000	Fuel Tank Cap seal gas	2
10	25180230000	fuel tank body	1
11	25150010000	Filtering Net Duct of F	1
12	60230020000	fuel pipe lock clamp I	1
13	25160020000	fuel pipe	1
14	60230010000	fuel pipe lock clamp II	1
15	60240250000	Fuel tank mounting b	1
16	25190250000	The transparent cove	1
17	60140050000	Hex flange nuts	1
18	75210010000	starter hub	1
19	25040110000	fan	1
20	75390240000	flywheel assy	1
21	60360090000	oil seal	1
22	60080230000	Dual-head bolts	3
23	60060520000	Bolt	8
24	75330070000	main bracket of fuel t	1
25	60060550000	Bolt	1
26	60060530000	Bolt	7
27	75380900000	detent assy.	1
28	60410050000	valve spring	1
29	75160060000	Handspike of Valve	1
30	75290010000	rate-limiting rocker ar	1
31	60200490000	Gasket	2
32	60360080000	oil seal	1
33	60300040000	R type pin	1
34	60060730000	bolt	1
35	75070010000	throttle rocker arm	1
36	60450010000	clip	1
37	75360010000	single phrase throttle	1
38	60410470000	throttle control spring	1
39	60200180000	clockwise gear gasket	1
40	75250010000	pin	2
41	75470020000	camshaft assy.	1
42	75720240000	Respirator head gaske	1
43	60280030000	spacing pin	2
44	75520020000	rete-limiting gear assy	1
45	25070010000	Sliding Sleeve	1
46	60200060000	Gasket	1
47	75280020000	rate-limiting gear sha	1

48	75270030000	rate-limiting gear sha	1
49	75240120000	Crank box cover	1
50	60360100000	oil seal	1
51	60060590000	Bolt	7
52	60200150000	Oil drain bolt gasket	1
53	60061020000	Oil drain bolt	1
54	25200130000	Lubricating Gauge Ass	1
55	60060630000	Bolt	1
56	25120060000	Air Filter Cover	1
57	25300120000	Foam filter	1
58	25020050000	Vent groove cover pla	1
59	25110100000	An air filter base.	1
60	25030070000	waste pipe	1
61	75730100000	Air filter paper pad	1
62	75410410000	CARBURETOR	1
63	25210020130	prime button II	1
64	75730030000	Carburetor paper pad	1
65	25090010000	Air Inlet Pipe	1
66	75730020000	Carburetor paper pad	1
67	60080030000	Dual-head bolts	4
68	75130130000	Piston Ring I	1
69	75130140000	Piston Ring II	1
70	75090060000	Guide Rail	2
71	75000070000	Bushing Ring	1
72	60310010000	piston pin	1
73	60400020000	Piston Pin circlip	2
74	75120090000	Piston	1
75	75460070000	connecting rod assy.	1
76	75510750000	crankshaft assy.	1
77	75500160000	crankshaft box assy.	1
78	75720100000	Cylinder head gasket	1
79	60280020000	spacing pin	2
80	75190040000	Exhaust Valve	1
81	75170040000	IntakeValve	1
82	75490090000	cylinder head assy.	1
83	60050030000	locking bolt	4
84	75180020000	Spring Coil of Exhaust	1
85	75350030000	push rod	2
86	75290050000	Valve rocker shaft	2
87	75080040000	cylinder head cover	1
88	75720300000	Cylinder head gasket	1
89	75230031000	Exhaust valve rocker	1
90	60240240000	washer	2
91	75230030000	Air intake door rocker	1
92	75200010000	Top Cover of Exhaust	1
93	75180010000	Spring Coil of Intake V	1
94	60380090000	valve spring	2
95	60360130000	oil seal assy	1
96	75140010000	spark plug	1
97	60150100000	Self-locking nut	2

98	75530030000	muffler cover assy.	1
99	75540030000	muffler assy.	1
100	75740020000	Muffler insulating pad	1
101	75030110000	wind shield	1
102	75100030000	Respirator valve plate	1
103	75720310000	Respirator head gasket	1
104	75400030000	Valve rocker shaft	1
105	75370070000	ignition assy.	1
106	60060580000	Bolt	2
107	71160010000	Single speed control p	1
108	60060510000	Bolt	2
109	25190160640	The transparent cover	1